

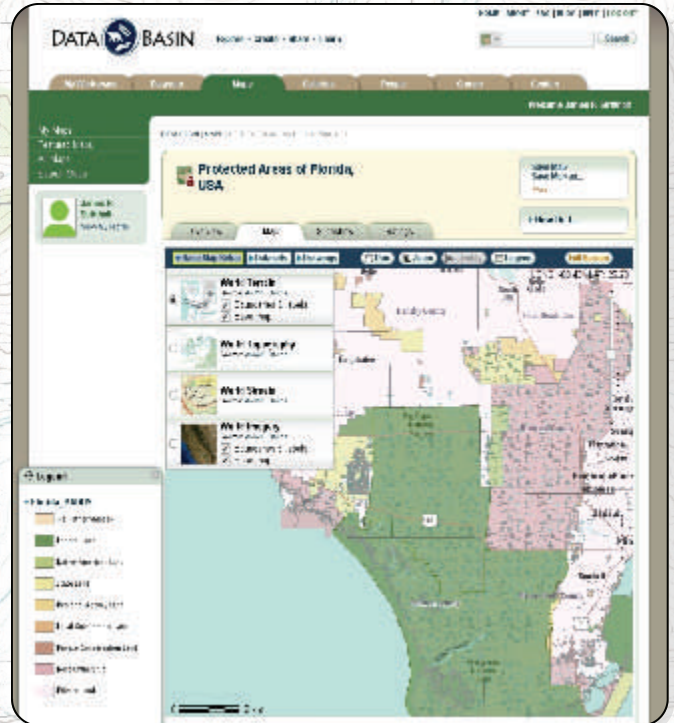


PAD-US 1.1 CBI Edition

▲ Comprehensive ▲ Scalable ▲ Accessible ▲ Informative ▲ Essential ▲

Protected areas are the cornerstones around which regional, national and international conservation strategies are developed. Through protected area designations, lands and waters are set aside in perpetuity to preserve functioning natural ecosystems, provide refuges for species, and maintain ecological processes. Working from this foundation, public agencies, private organizations and corporations develop and implement complementary conservation strategies to designate land for the sustainable use of natural resources, protection of significant geologic or cultural features, and provision of human services.

PAD-US 1.1 (CBI Edition) is the most current and comprehensive spatially-explicit protected areas dataset for the United States. It portrays the nation's protected areas with a standardized spatial geometry and numerous valuable attributes on land ownership, management designations, and conservation status. This update is a collaboration between federal (USDA Forest Service, USGS GAP, BLM), state agencies, Universities, Natural Heritage Programs and several private conservation organizations (including The Nature Conservancy). The goal is to provide an annual update, collaborating with the nation's leading data providers.



"This is a significant valued-added product for the agency and the FIA program, and as a long-time supporter, we are particularly excited about the quality and content of this new product."

- W. Brad Smith, Associate National Program Leader, Forest Inventory and Analysis, U.S. Forest

Where can I get the data? PAD-US 1.1 (CBI Edition) is freely available in multiple formats (ESRI GeoDatabase, shapefile, and layer package) and accessed from the Protected Areas Center, which is part of a new conservation data sharing site called Data Basin. Users can download the entire national dataset from the center landing page www.databasin.org/protected-center/features/PAD-US-CBI. Users can visualize and download individual states along with other conservation-related datasets using Data Basin tools.

How can this data help my work? This GIS-based dataset was created to help people integrate protected areas data into their daily work (e.g. mapping, planning, analyses, and problem-solving). For example, this database makes it easy for users to address important conservation and resource questions pertaining to climate change adaptation, green energy development, infrastructure planning, and wildlife connectivity. State and regional planners and managers will appreciate this dataset as it provides critical contextual information for their work. Institutions responsible for national and international reporting will find this database full of reliable, accurate information for their purposes. The scientific and conservation community will similarly benefit from having this standardized base map to carry out their research and planning objectives.

For more information contact:



Conservation Biology Institute
www.consbio.org
541-757-0687